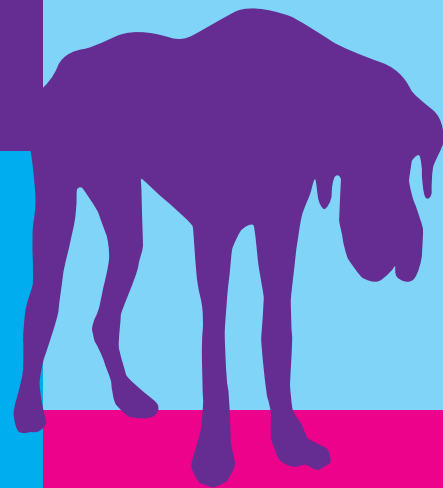
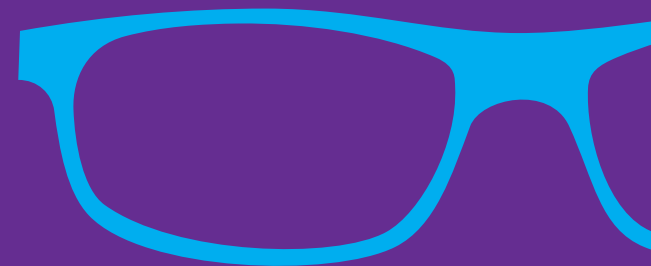
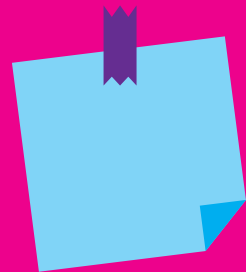
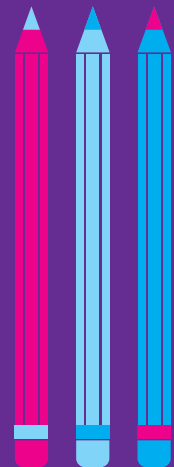
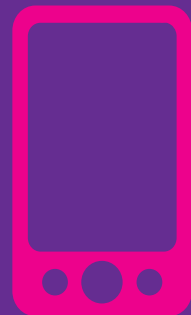
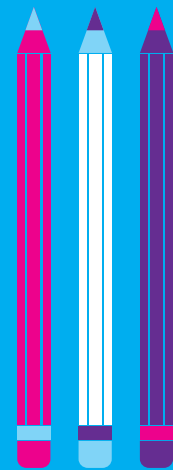


Otis & Piper™

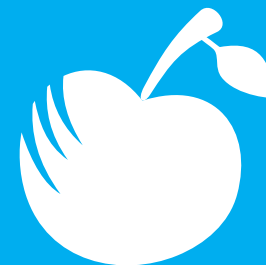


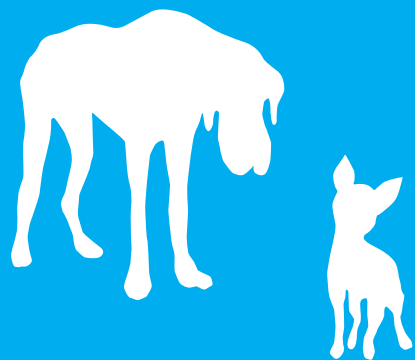


Otis & Piper



Brought to you by
VSP® Vision Care





Otis & Piper is a trendy, kid-friendly eyewear collection that features frames that are fun, durable, and affordable. The collection is available for VSP® Elements patients or can be purchased for any patient.

Use the Otis & Piper Collection to meet the eyewear needs of any child by offering...

The Boys:

- Cool styles
- Trendy colors
- Simple lines

The Girls:

- Fun colors
- Soft details
- Sassy designs

Parents can feel good about their kids wearing eyewear made with high quality materials, including stainless steel, colorful handmade acetate, and durable spring hinges.

Contact your Altair Eyewear sales representative for more information about the Otis & Piper Eyewear Collection.

OP4000 - Boys

Stainless Steel w/ Acetate Temples
Spring Hinges

| Eyeseize | A | B | ED | DBL | Temple |
|----------|------|------|------|-----|--------|
| 44 | 43.0 | 21.9 | 44.6 | 15 | 120 |
| 46 | 45.0 | 22.9 | 46.6 | 15 | 125 |



001-Licorice



200-Toffee

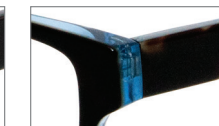
OP4002 - Boys

Acetate
Spring Hinges

| Eyeseize | A | B | ED | DBL | Temple |
|----------|------|------|------|-----|--------|
| 48 | 47.0 | 29.8 | 51.1 | 17 | 130 |
| 50 | 49.0 | 31.1 | 53.2 | 17 | 135 |



033-Grey Scale



200-Tortoise Sky

OP4001 - Boys

Acetate
Spring Hinges

| Eyeseize | A | B | ED | DBL | Temple |
|----------|------|------|------|-----|--------|
| 46 | 45.0 | 25.0 | 47.6 | 15 | 125 |
| 48 | 47.0 | 26.0 | 49.6 | 15 | 130 |



401-Macaw



001-Zebra

OP4003 - Boys

Stainless Steel w/ Acetate Tips
Spring Hinges

| Eyeseize | A | B | ED | DBL | Temple |
|----------|------|------|------|-----|--------|
| 50 | 49.0 | 27.1 | 49.9 | 17 | 135 |
| 52 | 51.0 | 28.2 | 51.9 | 17 | 140 |



200-Cedar Brown



401-Midnight Blue

OP4004 - Boys

Acetate
Spring Hinges

| Eye size | A | B | ED | DBL | Temple |
|----------|------|------|------|-----|--------|
| 54 | 53.0 | 30.4 | 55.6 | 16 | 140 |
| 56 | 55.0 | 31.5 | 57.6 | 16 | 145 |



001-Black



200-Camel

OP4501 - Unisex

Milled Metal w/ Acetate Temples
Spring Hinges

| Eye size | A | B | ED | DBL | Temple |
|----------|------|------|------|-----|--------|
| 48 | 47.0 | 26.0 | 49.2 | 16 | 130 |
| 50 | 49.0 | 27.2 | 51.2 | 16 | 135 |



001-Black Ink



601-Maroon

OP4500 - Unisex

Injected Plastic

| Eye size | A | B | ED | DBL | Temple |
|----------|------|------|------|-----|--------|
| 39 | 38.6 | 28.0 | 39.6 | 16 | 110 |



001-Baby Blue



414-Baby Pink

OP5000 - Girls

Stainless Steel w/ Acetate Temples
Spring Hinges

| Eye size | A | B | ED | DBL | Temple |
|----------|------|------|------|-----|--------|
| 44 | 43.0 | 20.0 | 43.3 | 15 | 120 |
| 46 | 45.0 | 20.9 | 45.3 | 15 | 125 |



200-Chocolate



505-Plum

OP5001 - Girls

Acetate
Spring Hinges

| Eyeseize | A | B | ED | DBL | Temple |
|----------|------|------|------|-----|--------|
| 47 | 46.0 | 23.7 | 47.2 | 16 | 125 |
| 49 | 48.0 | 24.7 | 49.2 | 16 | 130 |



601-Burgundy



033-Charcoal

OP5002 - Girls

Acetate
Spring Hinges

| Eyeseize | A | B | ED | DBL | Temple |
|----------|------|------|------|-----|--------|
| 46 | 45.0 | 23.5 | 46.7 | 16 | 125 |
| 48 | 47.0 | 24.6 | 48.7 | 16 | 130 |



201-Tortoise Plum



200-Tortoise Sky

OP5003 - Girls

Acetate
Spring Hinges

| Eyeseize | A | B | ED | DBL | Temple |
|----------|------|------|------|-----|--------|
| 48 | 47.0 | 32.5 | 51.1 | 17 | 130 |
| 50 | 49.0 | 33.9 | 53.3 | 17 | 135 |



001-Onyx Ruby



200-Tortoise Jade

OP5004 - Girls

Acetate
Spring Hinges

| Eyeseize | A | B | ED | DBL | Temple |
|----------|------|------|------|-----|--------|
| 51 | 50.0 | 25.3 | 51.3 | 15 | 130 |
| 53 | 52.0 | 26.3 | 53.3 | 15 | 135 |



001-Black Demi



200-Taupe Demi



Altair®

10875 International Drive, Rancho Cordova, California 95670 | 800.505.5557 | altaireyewear.com