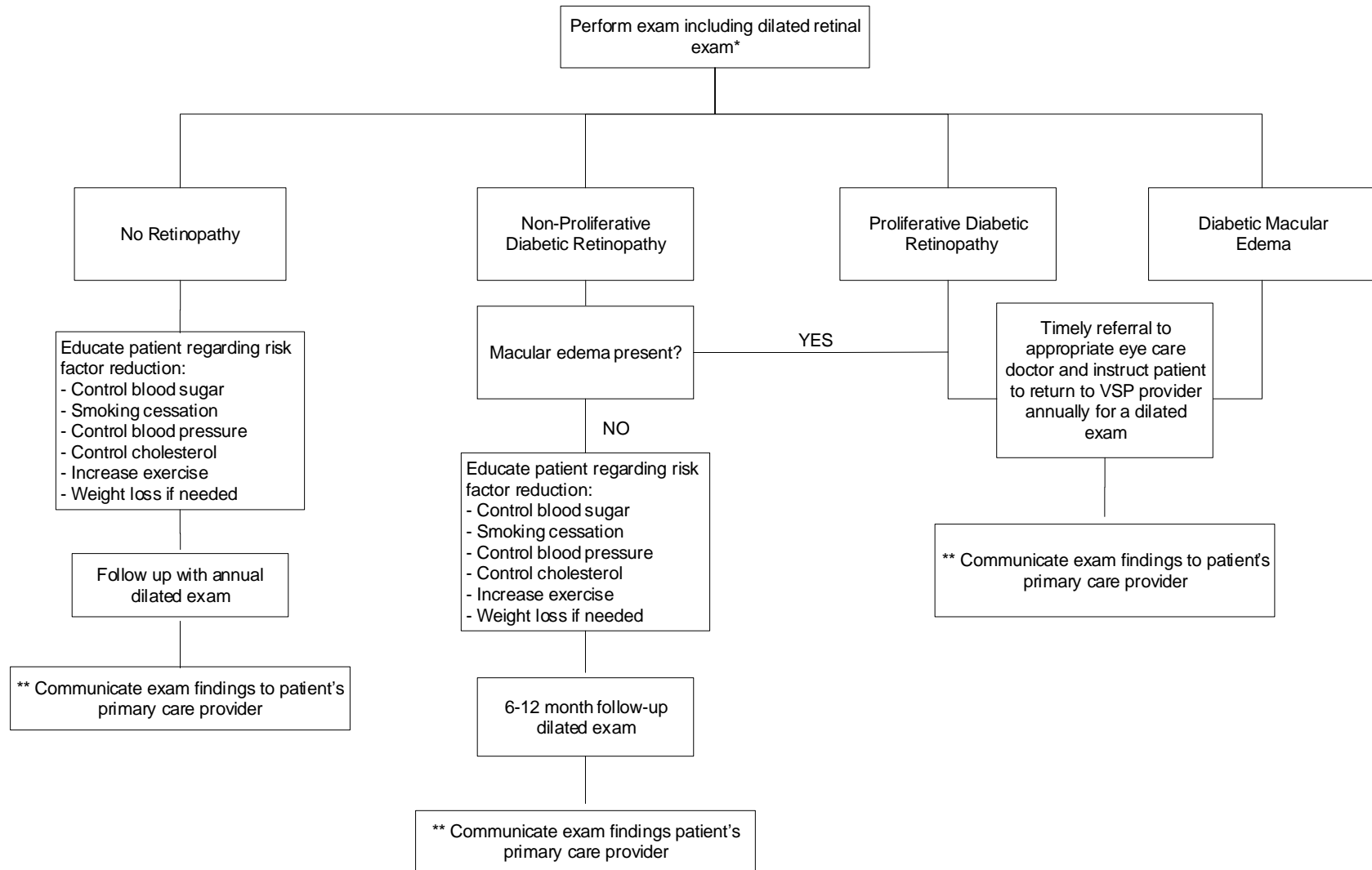


DIABETES



**PCP communication not required if: Pt under care of Ophthalmologist; PCP is an institution; Letter sent within Last Twelve Months. Pt did not provide PCP; Pt declined; Part of integrated medical record; PCP orders requesting exam are included in pt medical record.

*Dilated fundus exam is the recognized standard of care of diabetic patients. Retinal photography does not take the place of dilated exam of these patients. If dilation not performed, document clinical rationale in patient medical record.